

## Features

- Small Size and Low Profile
- Industry Standard SOT-26 SMT Plastic Package
- Typical Insertion Loss: 0.6 dB
- Typical Isolation: 15 dB
- 1 Watt Power Handling
- Lead-Free SOT-26 Package
- 100% Matte Tin Plating over Copper
- Halogen-Free “Green” Mold Compound
- 260°C Reflow Compatible
- RoHS\* Compliant Version of DS52-0008

## Description

M/A-COM’s MAPDCC0011 is an IC-based monolithic power divider using M/A-COM’s GMIC technology in a low cost SOT-26 plastic package. This 2-way power divider is ideally suited for applications where small size, low insertion loss, superior phase/amplitude tracking and low cost are required. Typical applications include personal communication systems and other communication applications where size and PCB real estate are at a premium. Available in tape and reel.

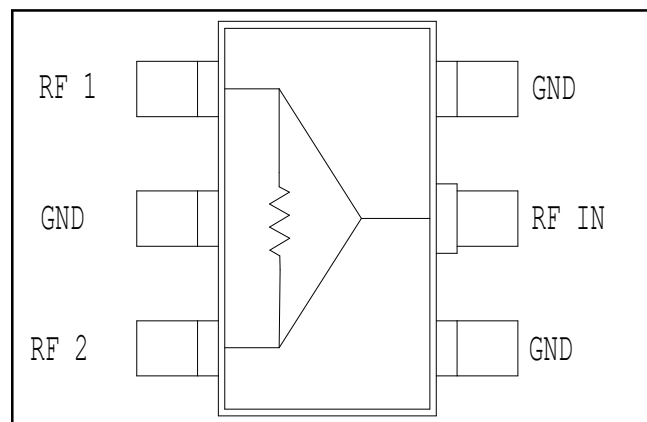
The MAPDCC0011 is fabricated using a passive-integrated circuit process. The process features full-chip passivation for increased performance and reliability.

## Ordering Information

Part Number	Package
MAPDCC0011	Bulk Packaging
MAPDCC0011-TR	1000 piece reel
MAPDCC0011-TB	Sample Test Board

Note: Reference Application Note M513 for reel size information.

## Functional Diagram



## Pin Configuration

Pin No.	Function	Pin No.	Function
1	RF1	4	GND
2	GND	5	RF IN
3	RF2	6	GND

\* Restrictions on Hazardous Substances, European Union Directive 2002/95/EC.

**Electrical Specifications:  $T_A = 25^\circ\text{C}^1$**

Parameter	Units	Min	Typ	Max
Insertion Loss Above 3.0 dB	dB	—	0.6	0.8
Isolation	dB	13	15	—
VSWR Input	—	—	1.3:1	1.4:1
RF1, RF2 Outputs	—	—	1.3:1	1.5:1
Amplitude Balance	dB	—	0.1	0.25
Phase Balance	Deg.	—	3	5

1. All specifications apply with a 50-ohm source and load impedance.

**Absolute Maximum Ratings <sup>2,3</sup>**

Parameter	Absolute Maximum
Input Power <sup>4</sup>	1W CW
Operating Temperature	-40°C to +85°C

- Exceeding any one or combination of these limits may cause permanent damage to this device.
- M/A-COM does not recommend sustained operation near these survivability limits.
- With internal load dissipation of 0.125 W maximum.

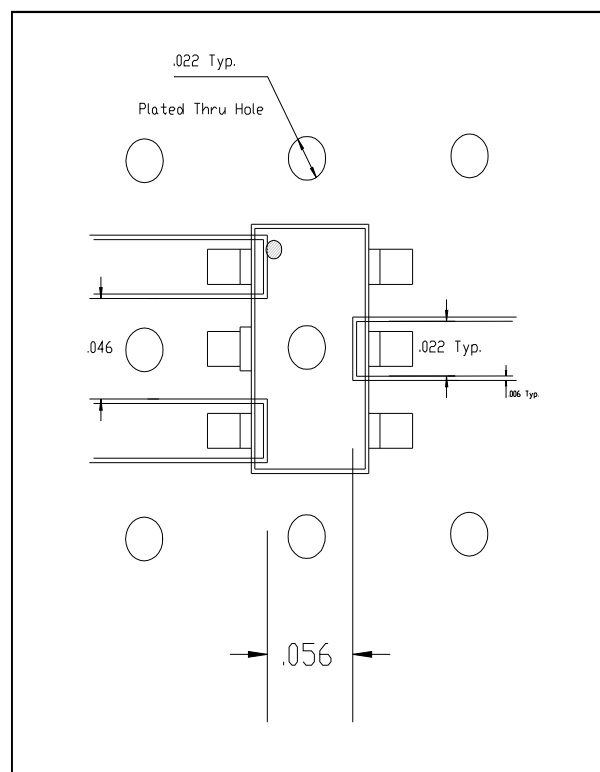
**Handling Procedures**

Please observe the following precautions to avoid damage:

**Static Sensitivity**

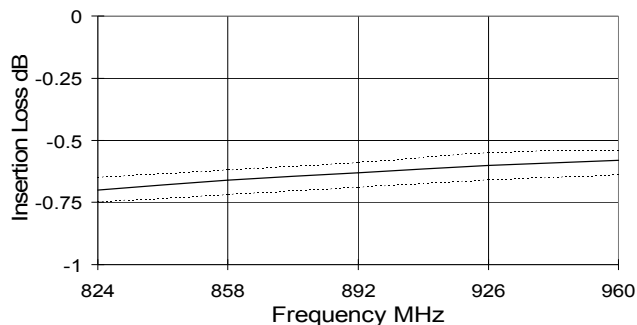
GMIC Circuits are sensitive to electrostatic discharge (ESD) and can be damaged by static electricity. Proper ESD control techniques should be used when handling these devices.

**Recommended PCB Configuration**

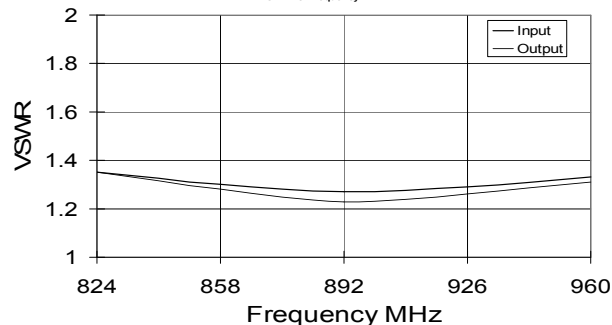


## Typical Performance Curves @ 25°C

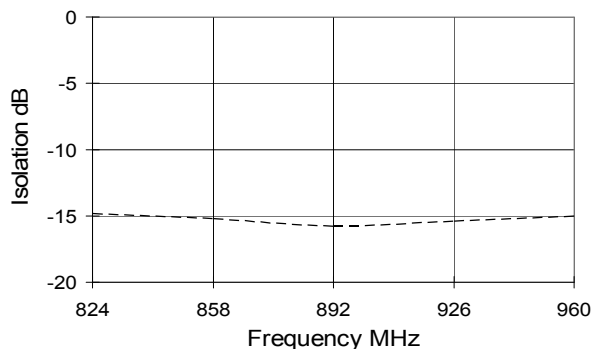
**Insertion Loss vs. Frequency**  
*(Dashed lines show amplitude balance window)*



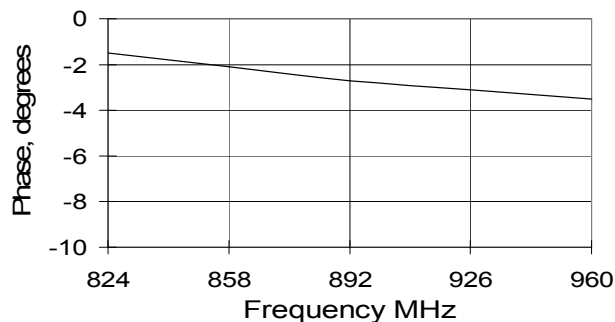
**VSWR vs. Frequency**



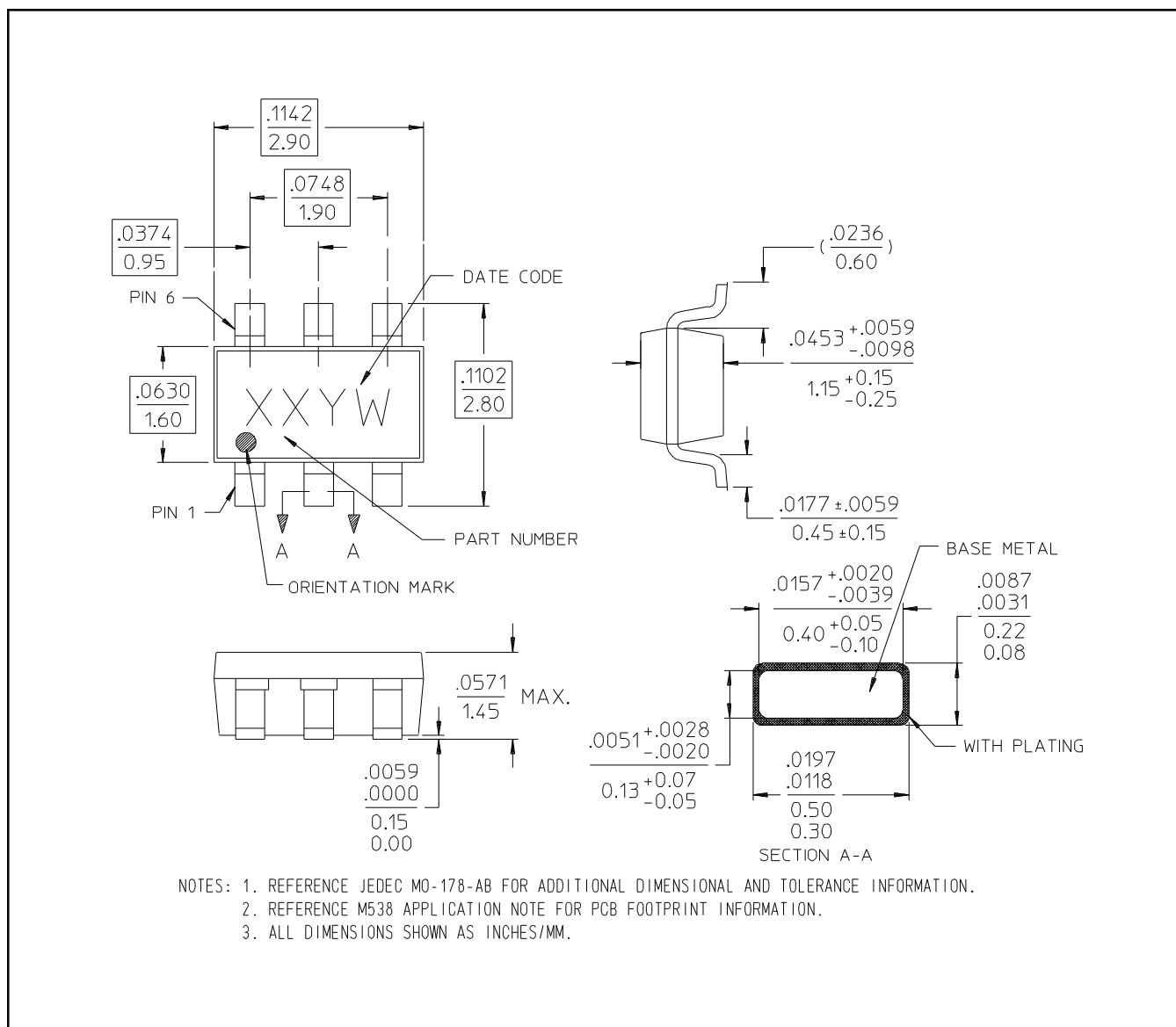
**Isolation vs. Frequency**



**Phase Balance vs. Frequency**  
*(Relative to RF1)*



**Lead-Free SOT-26<sup>†</sup>**



<sup>†</sup> Reference Application Note M538 for lead-free solder reflow recommendations.